

**Portable
Digital
3-Channel
ECG**

EZ-3 Electrocardiograph

Clear, easy-to-read

3-channel tracings

from a small,
portable ECG.



Futuremed's EZ-3 is a 3-channel electrocardiograph that incorporates the convenience and precision of a digital, 12-lead ECG with the economy and small size of single-channel instruments.

EZ-3 is compact and lightweight, making it easily portable. An AC/DC power supply allows use in virtually any setting. The instrument's self-charging lead-acid battery works twice as long as traditional ECG batteries, providing extended operation when electricity is not readily available.

To insure accuracy, data is acquired on 12 simultaneous leads at the rate of 1000 Hz/lead. ECG traces are stored in a 10 second memory and reproduced in an extraordinarily crisp printout. Traces can be copied in different formats.

- » *12 simultaneous lead ECG data acquisition*
- » *AC/DC power with rechargeable lead-acid battery*
- » *Fast printouts at the touch of a button*
- » *Available with Measurements and Interpretation*

Printouts allow ample room per channel, eliminating tracing overlap. Multiple digital filters are provided to suppress myograph artifacts, AC disturbances and baseline wandering.

Futuremed's EZ-3 is available with an optional program for the detection and measurement of main waves offset and onset, amplitudes and duration of P, QRS and T for all 12 ECG leads. The operator can choose detailed reports with all such data, or concise ones with shorter statements of interpretation.

EZ-3 is available in English, Spanish, French, Italian, Portuguese and other languages.

Clean, easy-to-read ECGs. Instrumentation designed for the highest standards of patient care. High quality electrocardiographs from FUTUREMED, a leader in cardiopulmonary diagnostic equipment.

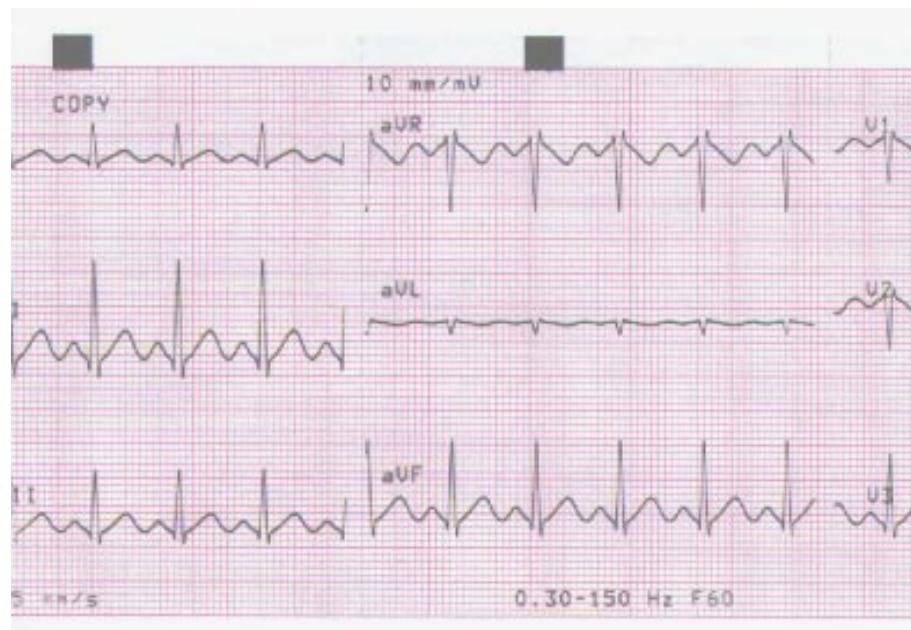
FUTUREMED

Futuremed America Inc.
21732 Devonshire Street
Chatsworth, CA 91311-2903 U.S.A.
(818) 775-1352 * (800) 222-6780 * Fax: (818) 775-1324

EZ-3 Electrocardiograph

Specifications

Leads	I, II, III, aVR, aVL, aVF, V1-V6, Standard/Carbrera	Power	115/240 VAC, 50/60 Hz
ECG Input	Simultaneous, synchronous input from 12 leads	Weight	6.4 lbs., 2.9 kg
Digital Sampling Rate	1000 s/sec/channel	Battery	Built in 12 V lead acid battery, rechargeable
Digital Resolution	5 μ V	Dimensions	11.8" x 8.5" x 3" 296 x 220 x 77.5 mm
Dynamic Range	+/-9 m VAC	Myogram Filter	25 Hz or 35 Hz, programmable. Stored ECGs can be printed with or without filter.
Electrode Offset Tolerance	+/-300 mVDC	Line Frequency Filter	Distortion-free suppression of superimposed 50 or 60 Hz sinusoidal interferences by means of an adaptive digital filter
Time Constant	>3.2 s	Special Functions	Lead-off and/or artifact detection, 10 second memory with tracing copy capability
Frequency Response	0.05 to 150 Hz (-3 dB)	Sensitivity	5 / 10 / 20 mm/mV
Input Impedance	>10M Ω	Paper Speed	5 / 25 / 50 mm/s (direct)
Patient Input	Fully floated and isolated, defibrillation protected	Paper Type	Z-Folded, 3.6" (90 mm)
Recording Tracks	3 channels, positioned at optimal width on 70 mm, auto baseline adjustment		
Printing Process	High resolution thermal print head, 8 dots per mm		



FUTUREMED

Futuremed America Inc., 15700 Devonshire Street, Granada Hills, CA 91344-7225
Phone: 818-830-2500 Fax: 818-891-4755 Toll Free 1-800-222-6780
www.futuremedamerica.com